

بِسْمِ اللَّهِ الرَّحْمَنِ الرَّحِيمِ

عنوان :

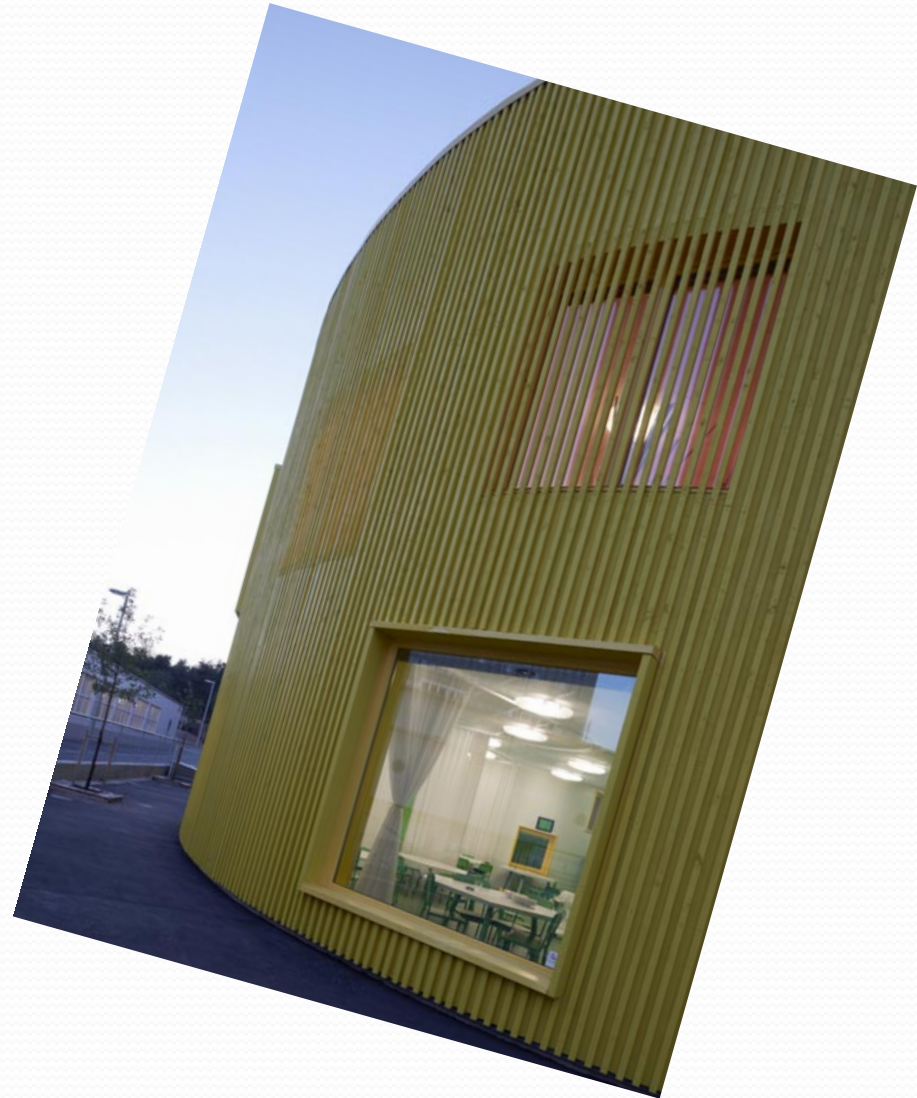
بررسی انواع ایده‌های ساخت  
دبستان

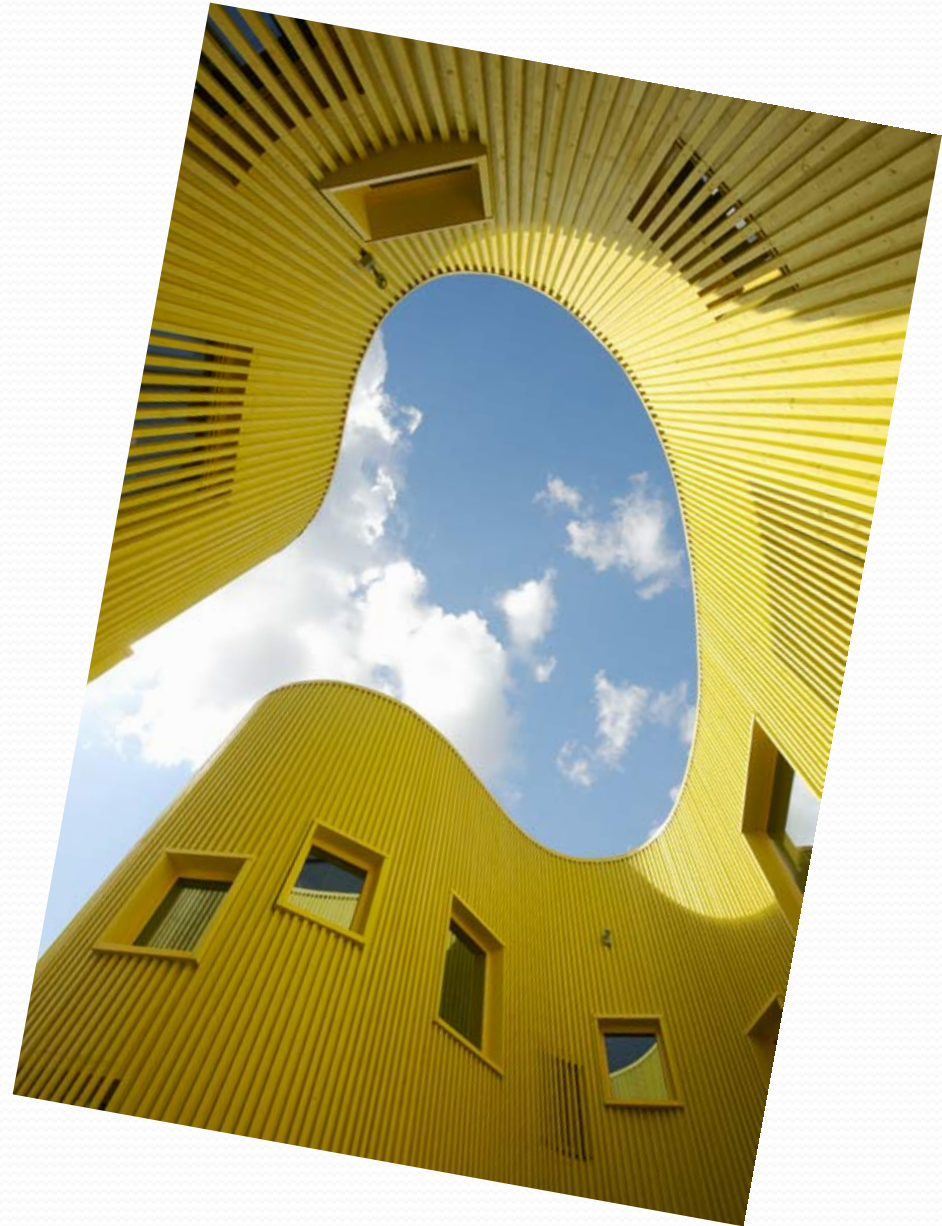
ایده:  
از قالب پنیر



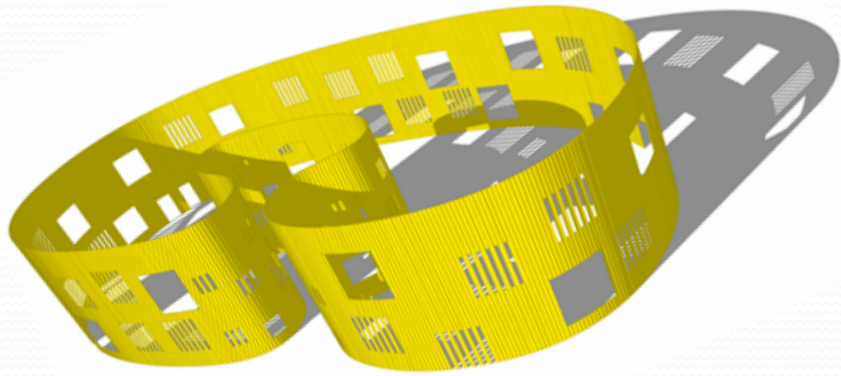






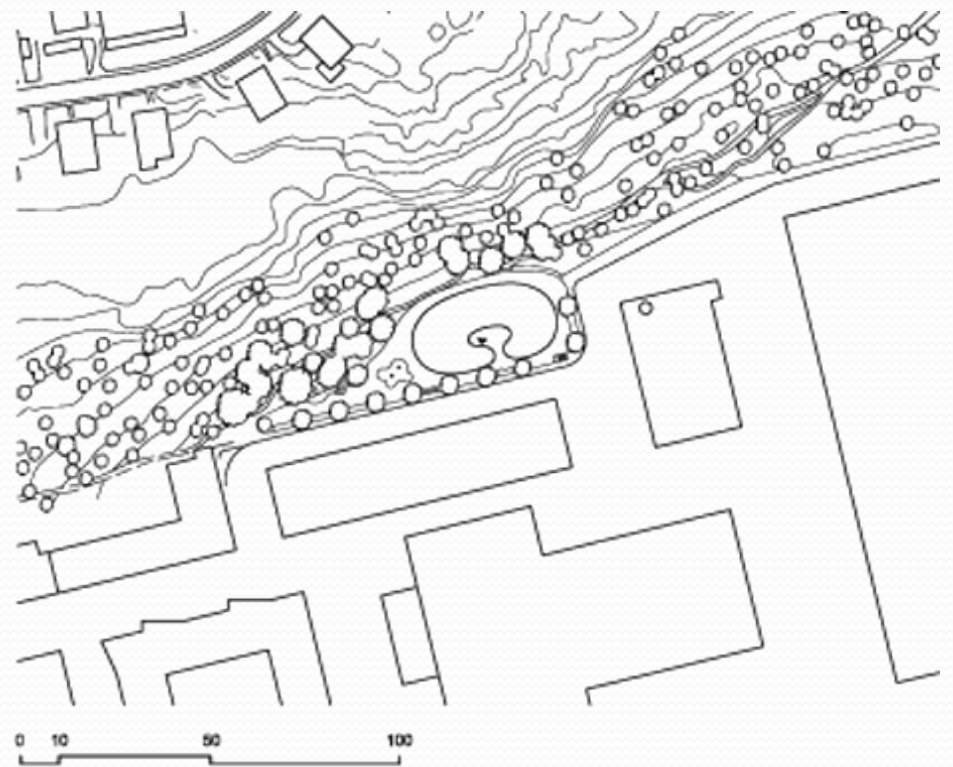












ایده :

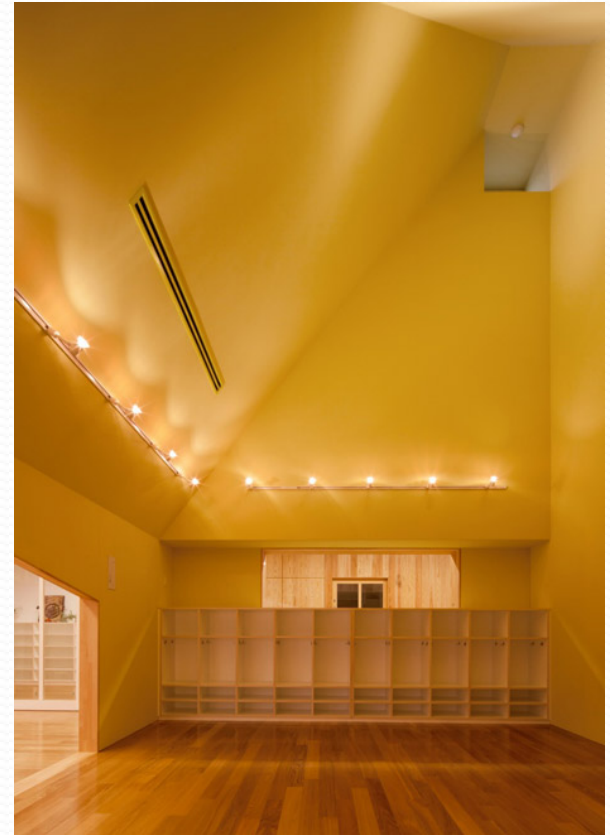
کلبه چوبی دانمارکی ها





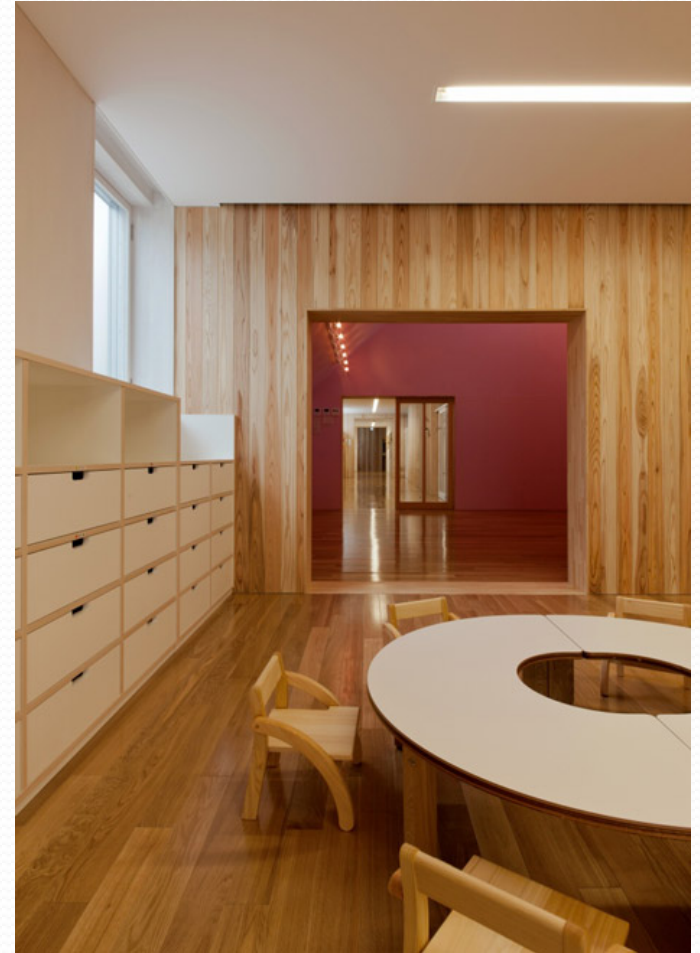




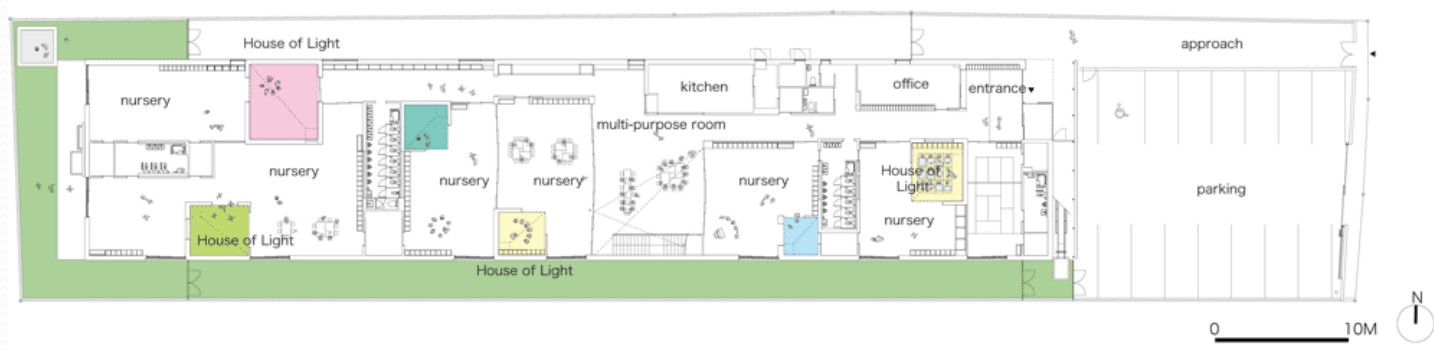
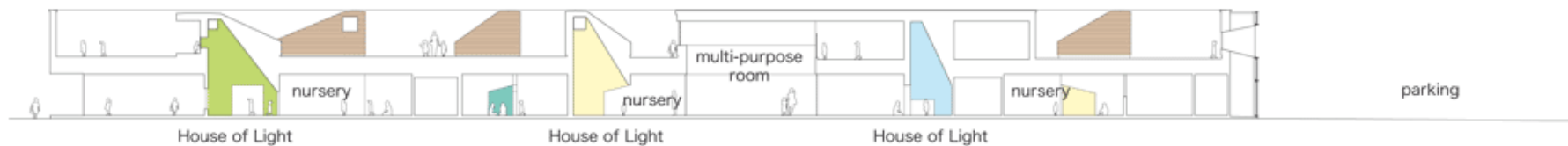






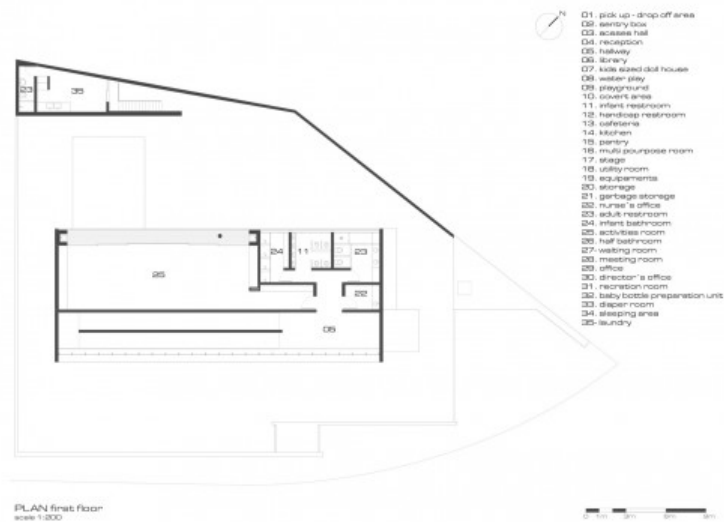
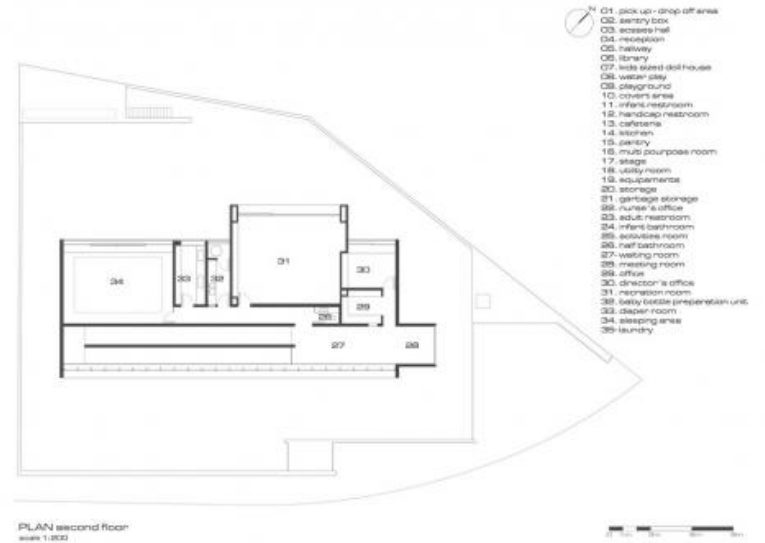
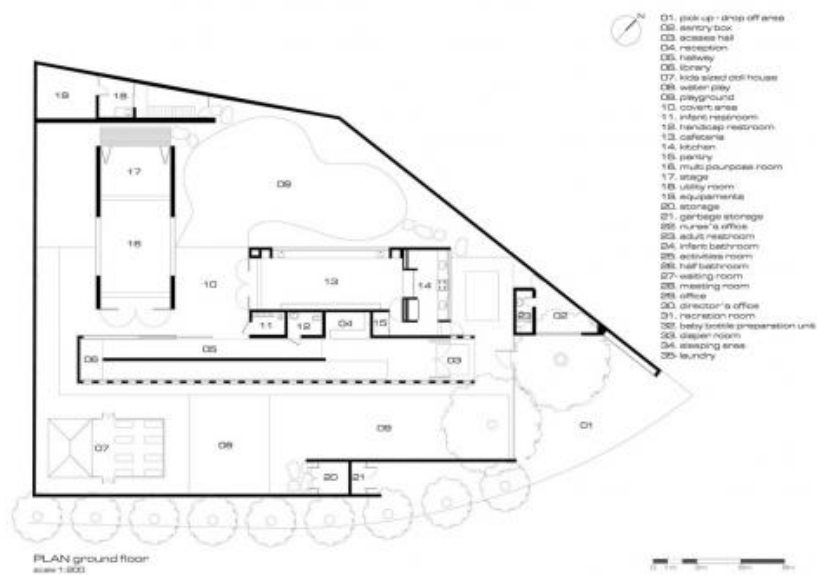


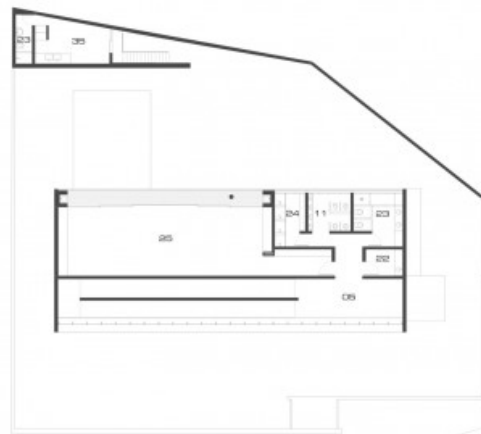




ایده :

کشتی

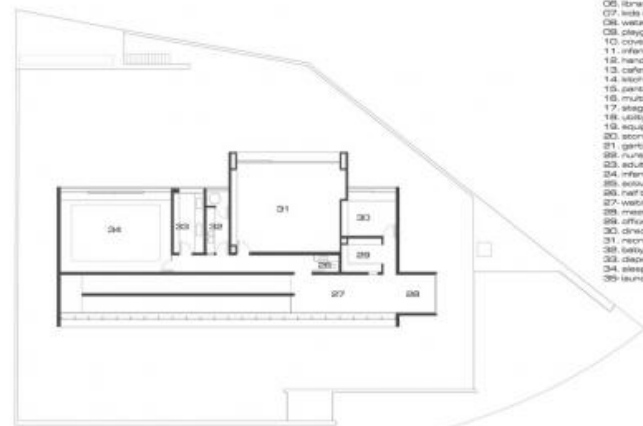




PLAN first floor  
scale 1:300



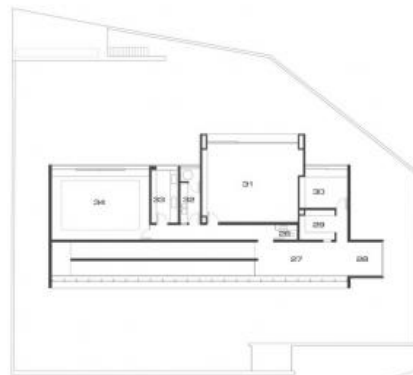
- 01. pick up - drop off area
- 02. entry box
- 03. access hall
- 04. reception
- 05. lobby
- 06. library
- 07. kids sized doll house
- 08. water play
- 09. playground
- 10. court area
- 11. infant restroom
- 12. handicap restroom
- 13. cafeteria
- 14. kitchen
- 15. pantry
- 16. multi purpose room
- 17. stage
- 18. utility room
- 19. equipment
- 20. storage
- 21. garbage storage
- 22. nurse's office
- 23. adult restroom
- 24. infant bathroom
- 25. activities room
- 26. half bathroom
- 27. waiting room
- 28. meeting room
- 29. office
- 30. director's office
- 31. recreation room
- 32. baby bottle preparation unit
- 33. diaper room
- 34. sleeping area
- 35. laundry



PLAN second floor  
scale 1:300



- 01. pick up - drop off area
- 02. entry box
- 03. access hall
- 04. reception
- 05. lobby
- 06. library
- 07. kids sized doll house
- 08. water play
- 09. playground
- 10. court area
- 11. infant restroom
- 12. handicap restroom
- 13. cafeteria
- 14. kitchen
- 15. pantry
- 16. multi purpose room
- 17. stage
- 18. utility room
- 19. equipment
- 20. storage
- 21. garbage storage
- 22. nurse's office
- 23. adult restroom
- 24. infant bathroom
- 25. activities room
- 26. half bathroom
- 27. waiting room
- 28. meeting room
- 29. office
- 30. director's office
- 31. recreation room
- 32. baby bottle preparation unit
- 33. diaper room
- 34. sleeping area
- 35. laundry



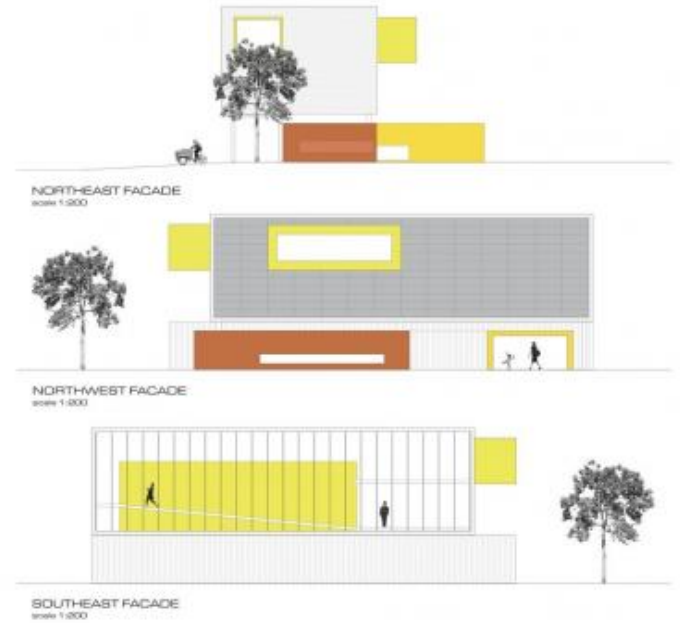
PLAN second floor  
scale 1:300



- 01. pick up - drop off area
- 02. entry box
- 03. access hall
- 04. reception
- 05. lobby
- 06. library
- 07. kids sized doll house
- 08. water play
- 09. playground
- 10. court area
- 11. infant restroom
- 12. handicap restroom
- 13. cafeteria
- 14. kitchen
- 15. pantry
- 16. multi purpose room
- 17. stage
- 18. utility room
- 19. equipment
- 20. storage
- 21. garbage storage
- 22. nurse's office
- 23. adult restroom
- 24. infant bathroom
- 25. activities room
- 26. half bathroom
- 27. waiting room
- 28. meeting room
- 29. office
- 30. director's office
- 31. recreation room
- 32. baby bottle preparation unit
- 33. diaper room
- 34. sleeping area
- 35. laundry









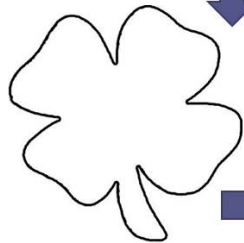




ایده :

از برگ گیشنیز





## Concept



The plot of the building is a four-leaf clover from which each leaf represents one department with associated facilities. Entrance leads to the central part with the common areas

## Land scape



## Site plan

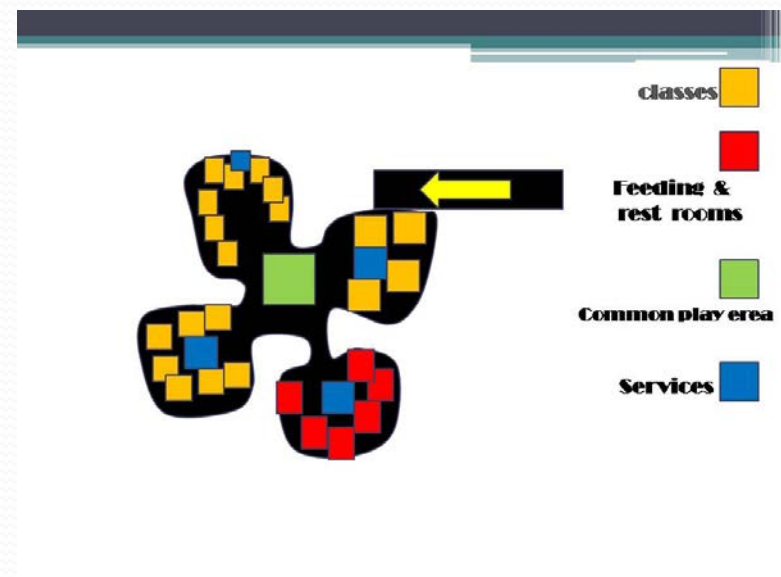
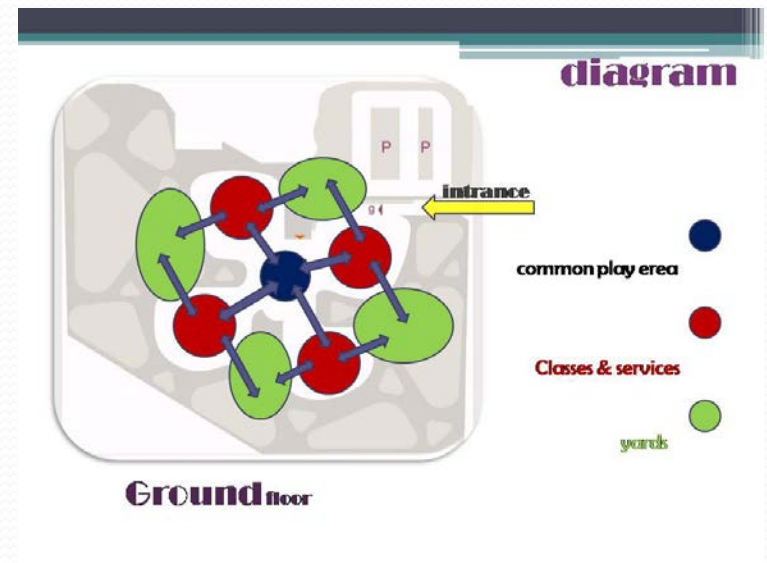
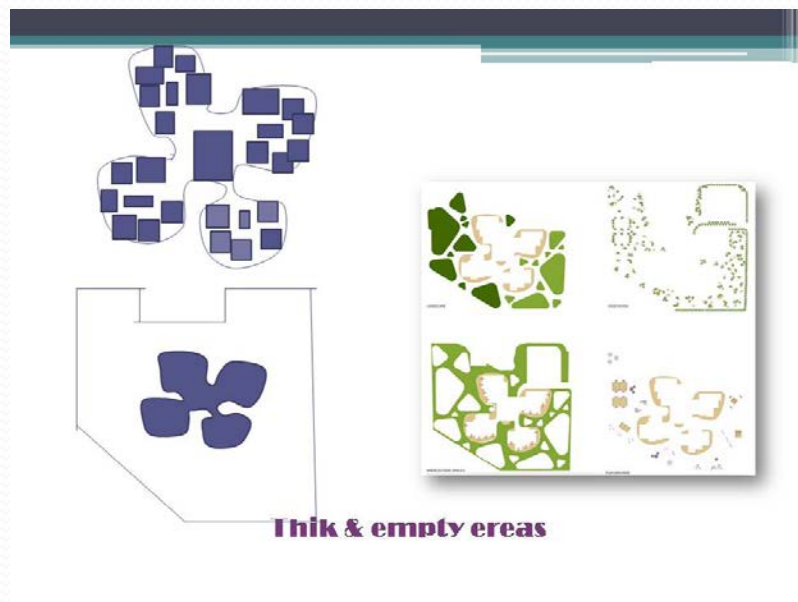


Main acces



Secondary acces







- Location: Ribnica, Slovenia  
 Type: Kindergarten  
 Client: Community of Ribnica  
 External green area: 11.500m<sup>2</sup>  
 Playgrounds: 7.800m<sup>2</sup>  
 Netto inner area: 3039m<sup>2</sup>  
 Brutto inner area: 3842 m<sup>2</sup>  
 No of external parking: 55  
 Percentage of build areas: 20%

## four leaf clover kindergarten

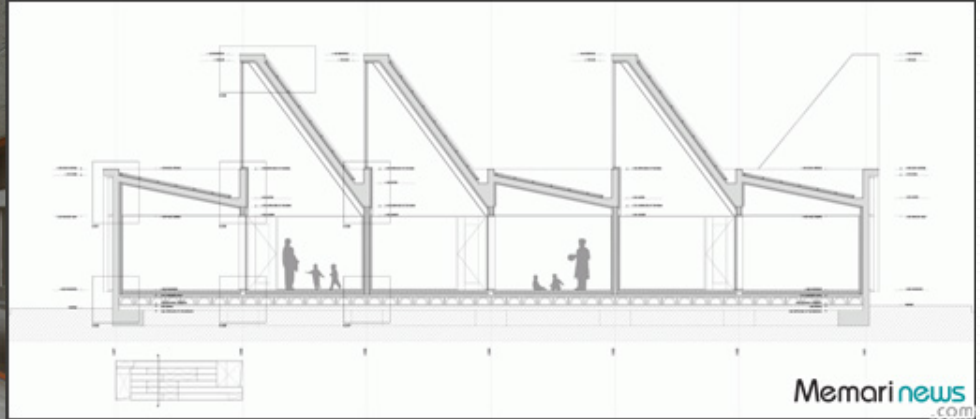


**Design: Ofis Arhitekti**  
**Competition 2010**  
**Navigation: Ribnica, Slovenia**



ایده :  
جعبه مداد رنگی







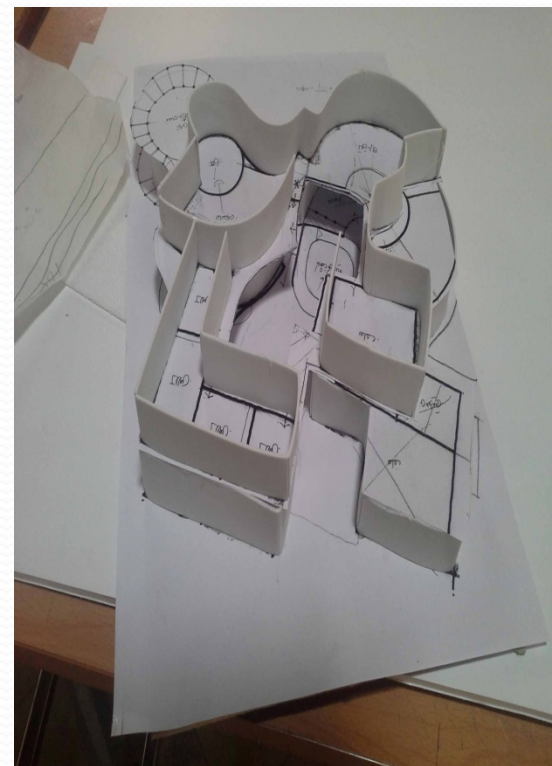
ایده :

از طرح گل







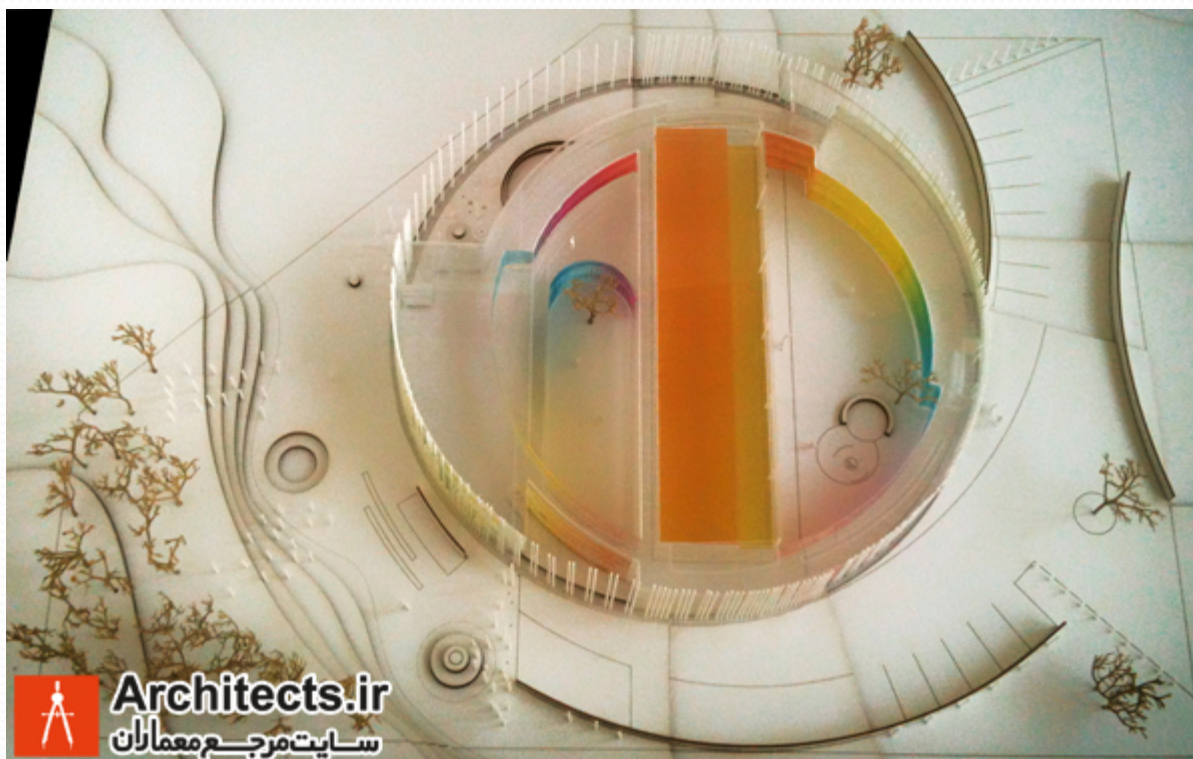




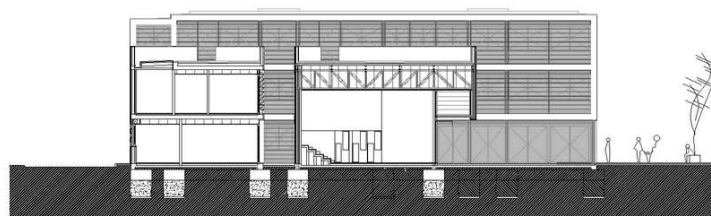
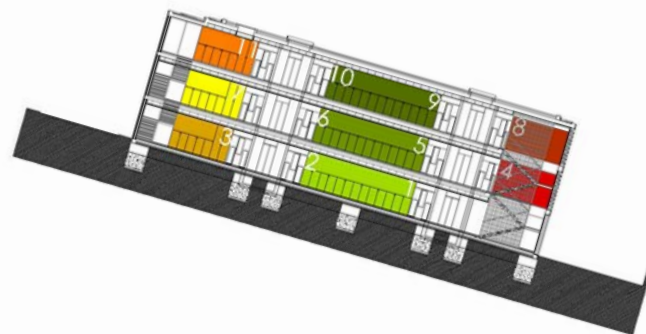
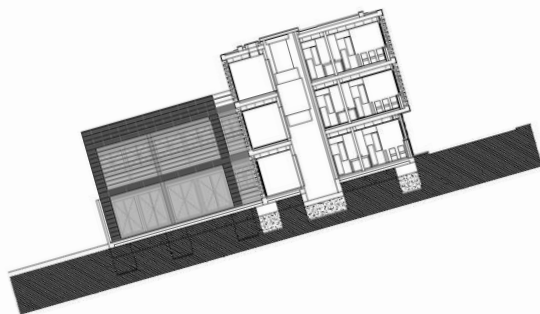


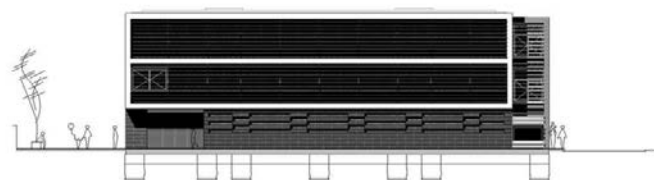
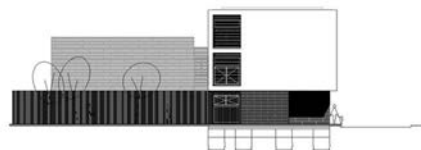
ایده :

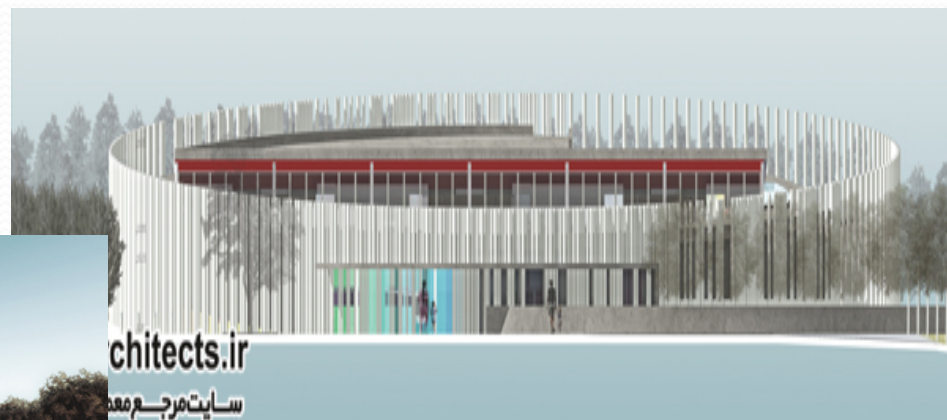




Architects.ir  
سایت مرجع معماران







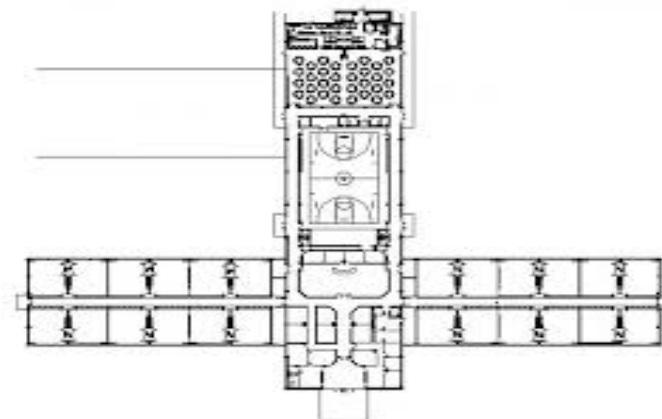
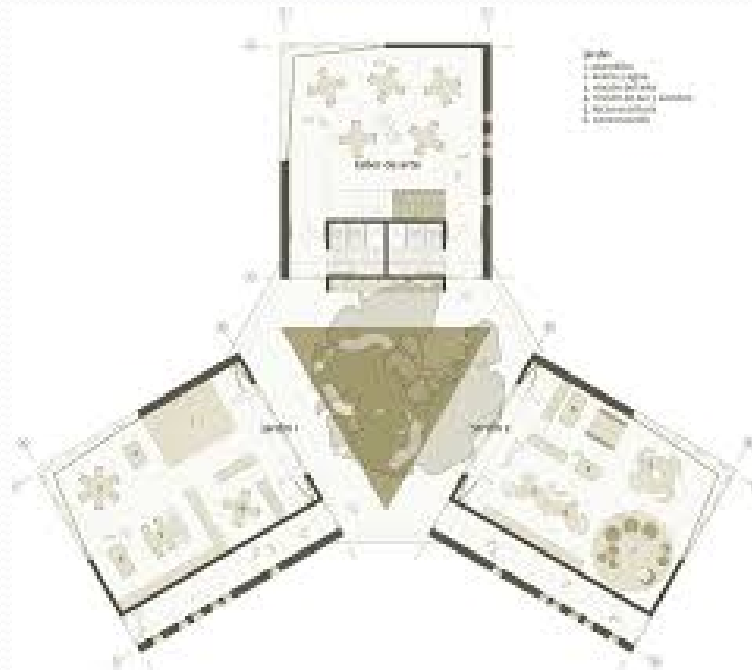




ایده های مختلف











پایان